



SUPPLY CHAIN SERVICES

The team behind your technology

Automate your warehouse with Supply Chain Services

HANDHELD MOBILE DEVICES

- Streamline and optimize inventory management
- Real-time product count and location visibility
- RFID and barcode technology
- Varying wireless networking capabilities and operating systems
- Wearable scanner options for increased mobility
- Zebra and Honeywell systems

VEHICLE MOUNT UNITS

- Versatile applications throughout warehouse
- Durable, built to withstand extremes
- Simplify installation, service and dismantling from vehicles
- Full Windows/embedded capability
- Zebra and Honeywell systems

MOBILE DEVICE MANAGEMENT SOFTWARE

- Centralized control of your warehouse fleet
- Staging, deploying and provision
- Real-time troubleshooting
- RMA assistance and online tracking
- Gold Image creation with multi-application integration

WIRELESS NETWORK

- Specialized 802.11 A/B/G/N/AC networks
- Fast speeds, secure connections
- Facility surveys, equipment selection, installation and configuration services
- Guaranteed 100% coverage, security and optimized bandwidth

PRINT & APPLY

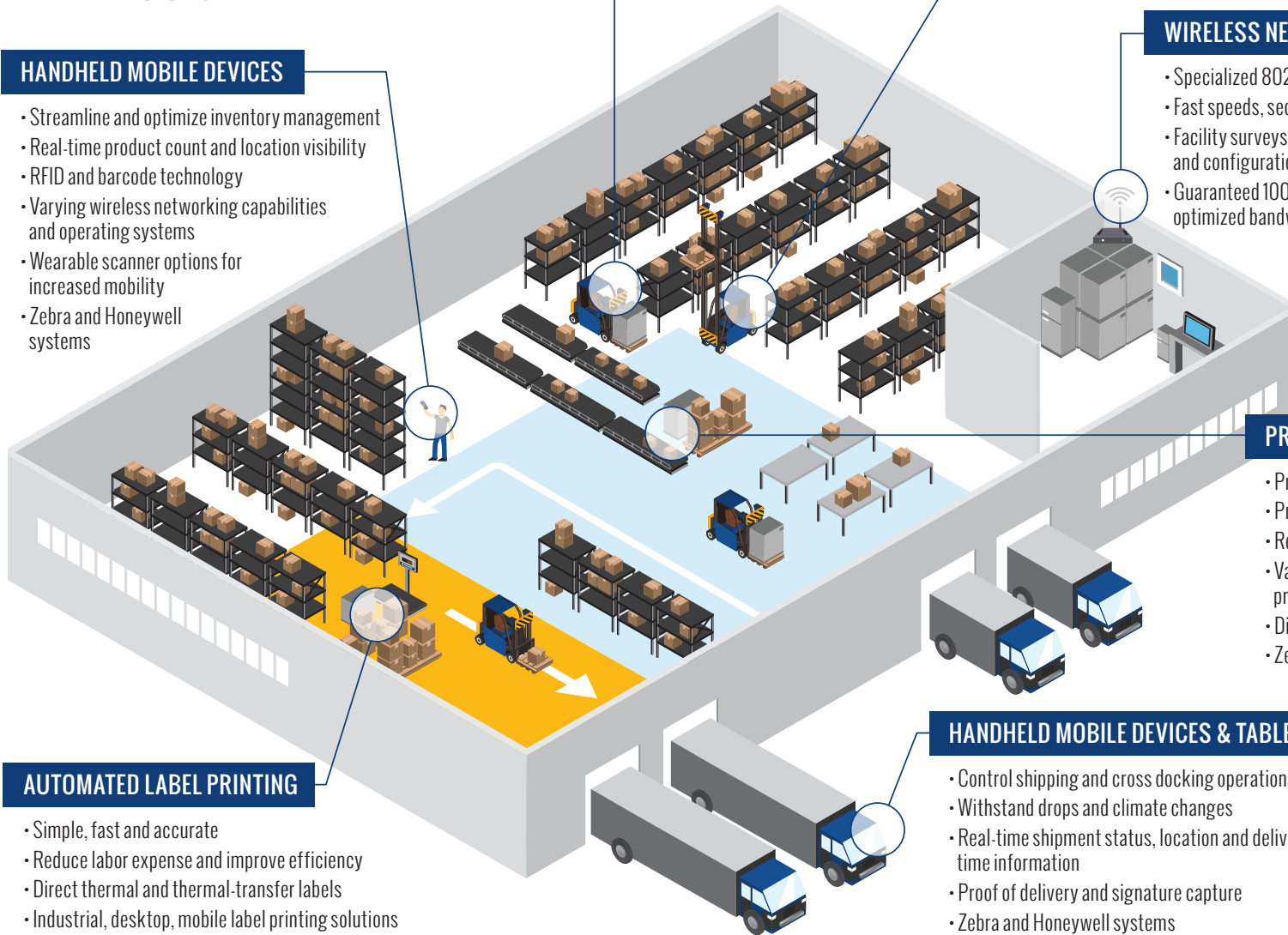
- Print directly on product, package or pallet
- Product data automatically sent to printer
- Reduce errors and overhead costs
- Variety of colors, shapes and sizes for blank or pre-printed labels
- Direct thermal or thermal-transfer
- Zebra and Honeywell systems

AUTOMATED LABEL PRINTING

- Simple, fast and accurate
- Reduce labor expense and improve efficiency
- Direct thermal and thermal-transfer labels
- Industrial, desktop, mobile label printing solutions

HANDHELD MOBILE DEVICES & TABLETS

- Control shipping and cross docking operations
- Withstand drops and climate changes
- Real-time shipment status, location and delivery time information
- Proof of delivery and signature capture
- Zebra and Honeywell systems



ZEBRA

Honeywell